

# AKUBARIK PASSIVE

## Floor-Standing Loudspeaker



### OVERVIEW

#### KEY FEATURES

- Isobaric bass system combines two drive units working in tandem for rich, deep bass within a compact cabinet
- 3K driver array houses the mid-range, tweeter & super tweeter in one unit to produce a single-point sound source, improving high frequency response
- Acoustically inert, braced cabinet provides rigidity and stable mounting of drive units
- Adjustable bass output for fine tuning of bass response to the room
- Available in 5 real wood veneers and over 200 gloss finishes

The combination of Linn's 3K driver array and a powerful isobaric bass system mounted in a beautifully curved, resonance-free cabinet makes Akubarik an exceptional passive speaker.

Passive Akubarik shares key acoustic technologies with the Aktiv version, but without the onboard amplification and Aktiv crossover, meaning you are free to specify whatever amplification you prefer, including upgrade options from bi-amping to Aktiv to Exakt.

Akubarik's gently curved cabinet is both practical and beautiful. Carefully placed internal bracing provides added rigidity and an acoustically inert enclosure for stable mounting of the drive units.

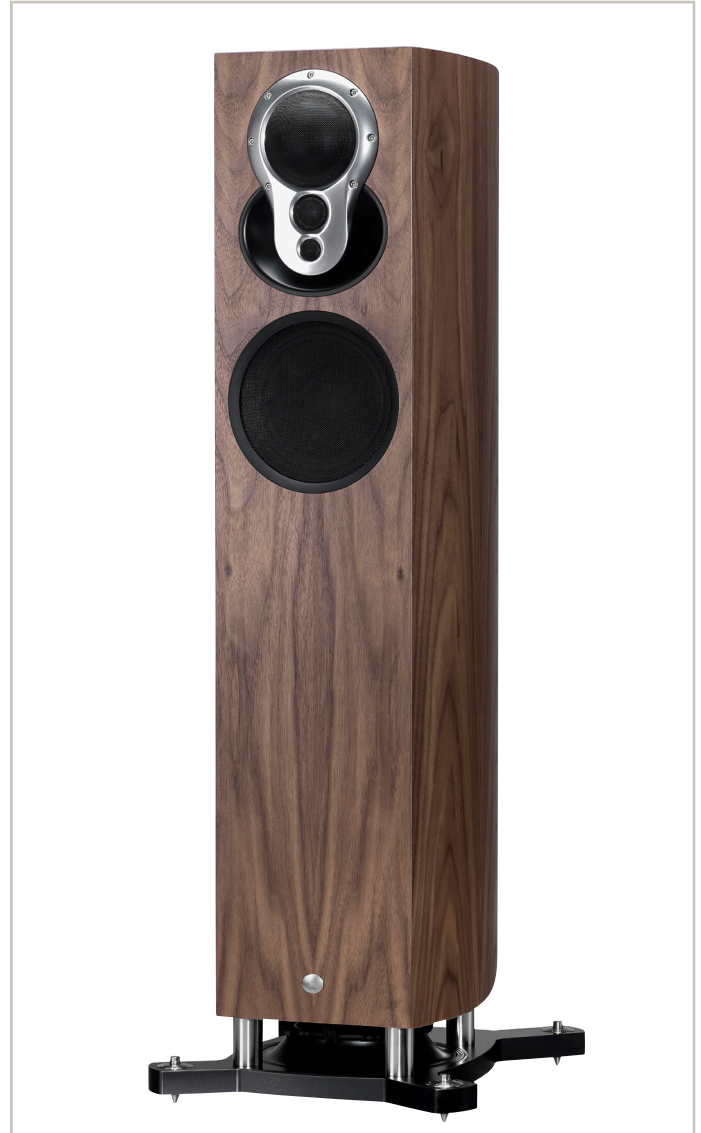
A completely sealed, large internal enclosure for the upper bass unit means that Akubarik delivers better transients and reduced distortion for improved performance over other cabinet designs.

Linn's 3K array technology creates a consistent single-point sound source and improves high frequency response, meaning you hear the same incredible level of detail throughout the room.

Akubarik produces lots of rich, deep bass, thanks to the isobaric bass system, consisting of two bass drive units positioned face-to-face within the base of the cabinet. Bass output can be adjusted for more flexible positioning in the room.

Stainless steel pillars hold the speaker to the stand, precision-machined from solid aluminium, providing a stable, rigid base that reduces vibration and improves performance and musicality.

Akubarik is available in a choice of high grade real wood veneers. These can be specified in standard or special high gloss finish, or choose from over 200 bespoke RAL colours. Akubarik can also be further personalised with a choice of chrome or black anodised 3K array finish.



Akubarik in Walnut with chrome 3K array



Close-up of precision-machined stand

# AKUBARIK PASSIVE

## Floor-Standing Loudspeaker

### TECHNICAL SPECIFICATIONS



Introduced	2013
Type	5-way floor-standing passive loudspeaker
Drive units	13 mm (0.5") dome 25 mm (1") dome 75 mm (3") dome 150 mm (6") upper bass 2 x 200 mm (8") isobaric lower bass
Operating volume	44 litres
Crossover options	Passive, bass Aktiv, fully externally Aktiv or externally Exakt
Crossover points	110 Hz, 318 Hz, 3.6 kHz, 9.84 kHz
Frequency range (-3dB)	28 Hz – 20+ kHz
Connection options	4mm banana plugs
Input impedance	4 $\Omega$
Magnetic shielding	No
Weight (including stand)	42 kg / 92 lb
Dimensions (including stand)	1050 mm (H) x 351 mm (W) x 450 mm (D) 41.3 inches (H) x 13.8 inches (W) x 17.7 inches (D)
Standard finishes	Black Ash, Cherry, Oak, Rosenut, Walnut, White
High gloss finishes	Piano Black, Cherry, Oak, Rosenut, Walnut, White, plus over 200 RAL Classic Gloss colours (all except luminous colours: RAL 3026, 3024, 2007, 2005 and 1026)
3K array finishes	Chrome, Black Anodised